

CAPTIVE SCREW

- Fast positioning device, does not require extra tool.
- Wing type knob designed for easy hand operation.
- Spring-ejected.
- Color management is available as required by customers.
- SMT assembly.

SMT 19 SERIES Wing Knob (small)

Patented.

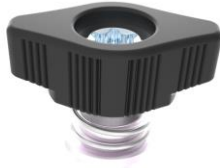
Material and Finish

KNOB: 6000 SERIES ALUMINUM , PLASTIC: TOUCH POINT BLUE.

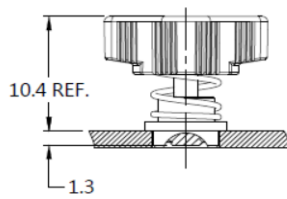
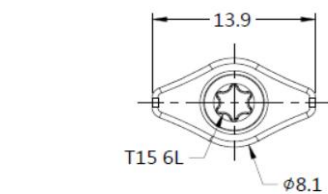
SCREW: 400 SERIES STAINLESS STEEL, NATURAL FINISH.

SPRING: 300 SERIES STAINLESS STEEL, NATURAL FINISH.

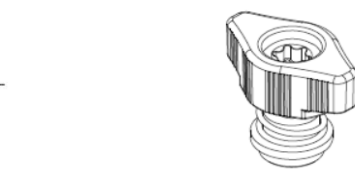
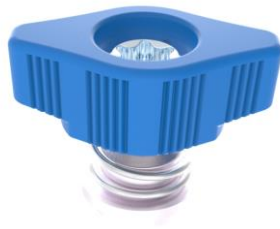
FERRULE: 6000 SERIES ALUMINUM, NATURAL FINISH.



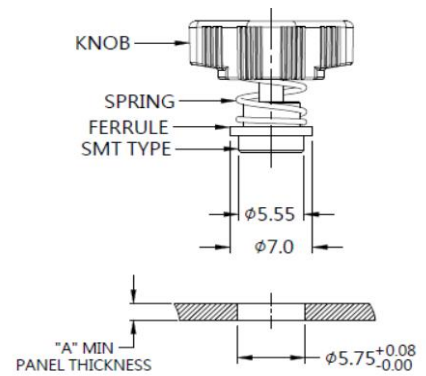
Panel Preparation



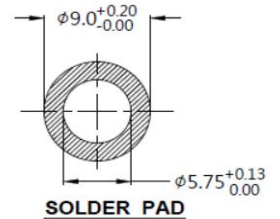
UNFASTENED



FASTENED



PANEL PREPARATION

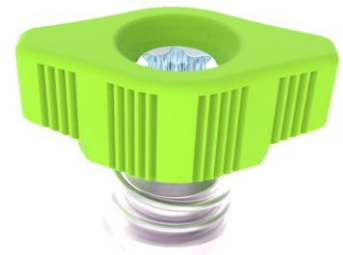


SOLDER PAD

Knob Color Options



Installation



Dimensions (mm)