

SPRING SPOOL

- Spring force increases spool securing tightness
- Decreases loosening possibility caused by vibration
- Spool designed for easy assembly, quick release purposes
- Lateral fastening contributes to direction limited panels

SPRING SPOOL

Patented.



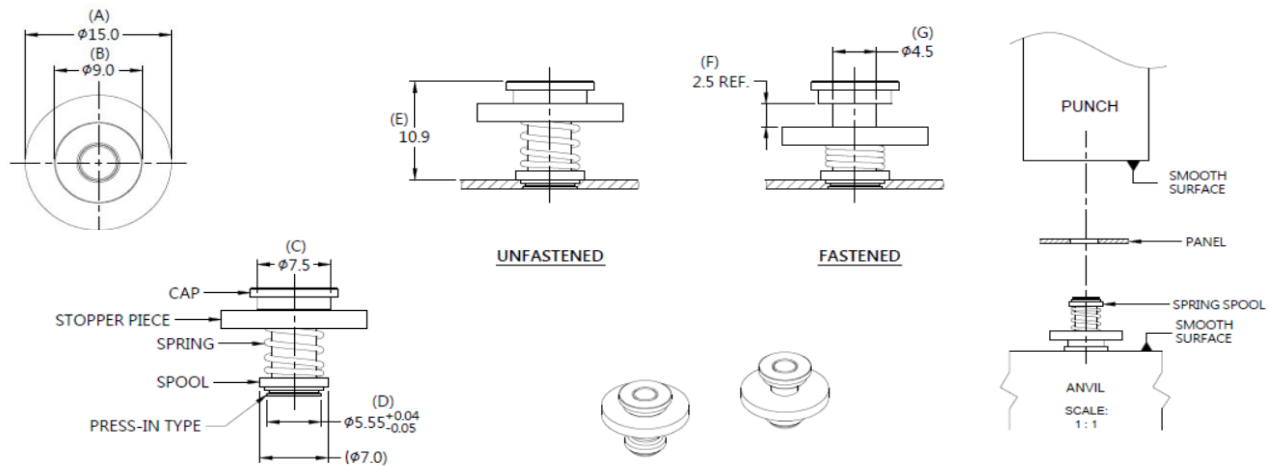
Material and Finish

CAP: CARBON STEEL, ZINC FINISH

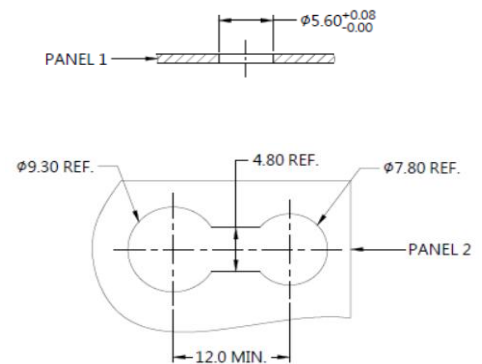
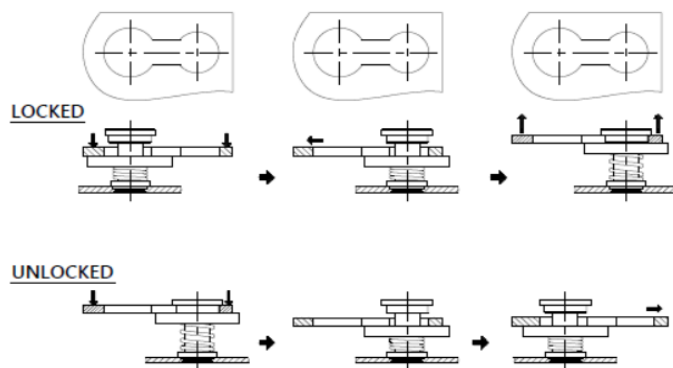
SPOOL: CARBON STEEL, ZINC FINISH

SPRING: 300 SERIES STAINLESS STEEL, NATURAL FINISH

STOPPER PIECE: 300 SERIES STAINLESS STEEL, NATURAL FINISH



INSTALLATION



PANEL PREPARATION



■ Dimensions (mm)

LENGTH "T"	PROJECTION		PANEL THICKNESS		DIMENSINOS	
	"P-1"	"P-2"	PANEL 1	PANEL 2	" L "	" B "
~	~	~	1.6 MIN.	2.4 MAX.	~	~