

PLUNGER

- Efficient performance in assembly, decomposition, and repair.
- Fast installation and removal for sliding module.
- Color management for plastic is available as required by customers.
- Low profile design is well fixed in any limit access of gap space

57 SERIES Low Profile Non-Positioning Plunger Patented.



Material and Finish

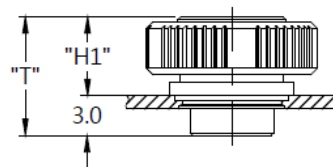
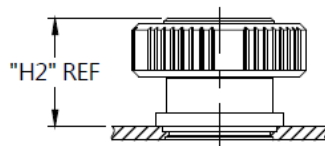
Knob :
Carbon Steel, Zinc Finish, Plastic.

Pin :
300 Series Stainless Steel, Natural Finish.

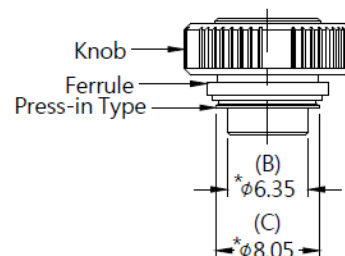
Spring :
300 Series Stainless Steel, Natural Finish.

Ferrule :
Carbon Steel, Tin Finish.

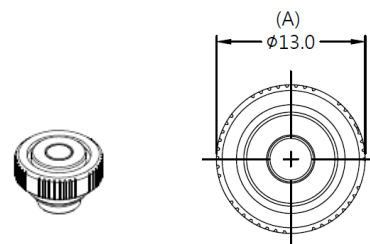
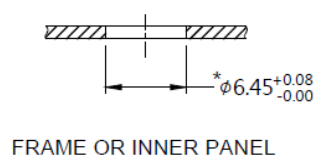
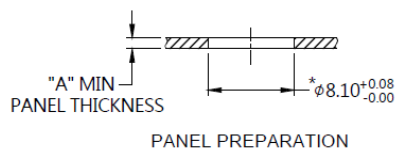
■ Projection



■ Installation Style

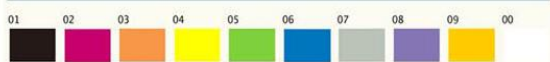


■ Panel Preparation



■ Knob Color Options

Color Options



■ Dimensions(mm)

SCREW LENGTH "T"	SCREW PROJECTION		PANEL THICKNESS		DIMENSINOS	
	"H1"	"H2"	"A" MIN	"A" MAX	" L "	" B "
9.0	6.0	8.1	1.0	~		