

SMT NUT & Standoff

- SMT full automatic reflow process can increase production stability and production efficiency
- Welding for reinstallation can increase product reliability

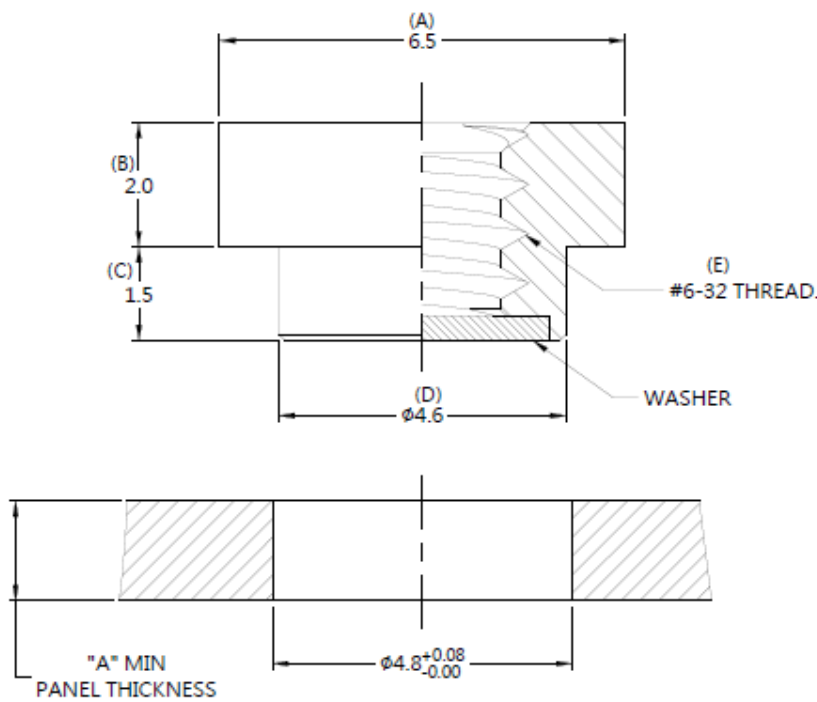
82 SERIES SMT NUT - #6-32 THREAD Patented.



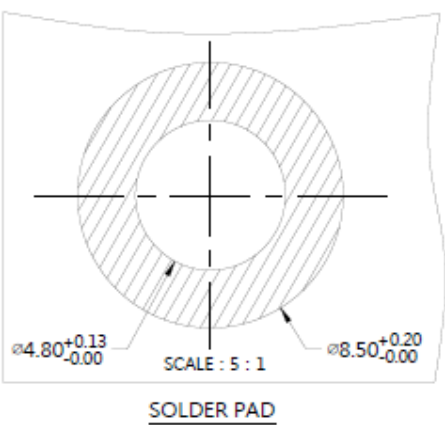
Material and Finish

Nut :
Carbon Steel, Tin Finish.
Washer :
PTFE.

■ Panel Preparation



■ Installation Style



■ Dimensions (mm)

SCREW LENGTH "T"	SCREW PROJECTION		PANEL THICKNESS		DIMENSINOS	
	P-1	P-2	A, MIN	A, MAX	" L "	" B "
~	~	~	1.6	~	~	~