

SMT NUT & Standoff

- SMT full automatic reflow process can increase production stability and production efficiency
- Welding for reinstallation can increase product reliability

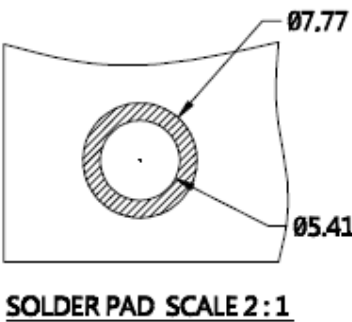
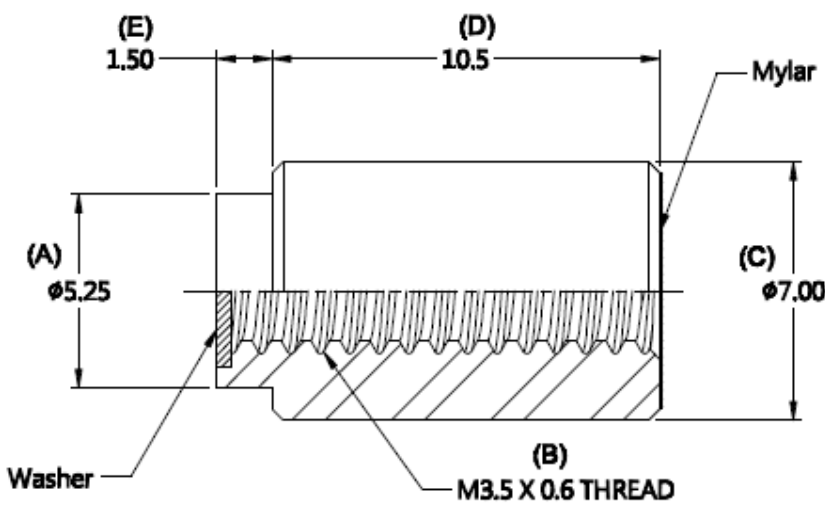
82 SERIES SMT NUT - M3.5 THREAD Patented.



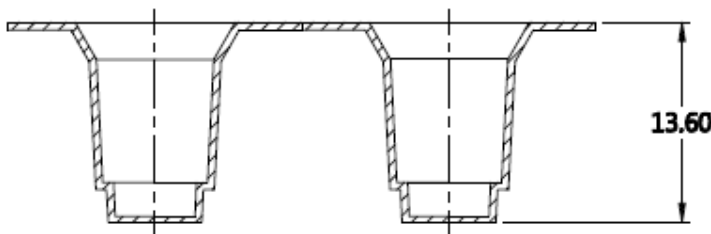
Material and Finish

Nut :
Carbon Steel, Tin Finish.
Washer :
PTFE.

■ Panel Preparation



■ Installation



REEL SCALE 2:1

■ Dimensions (mm)

| PART NUMBER | SCREW LENGTH "T" | SCREW PROJECTION | | PANEL THICKNESS | | DIMENSINOS | |
|------------------|---------------------|------------------|-----|-----------------|--------|------------|-------|
| | | P-1 | P-2 | A, MIN | A, MAX | " L " | " B " |
| 82-350-23-105-RL | ~ | ~ | ~ | 1.6 | ~ | ~ | ~ |